

Design Vinyl HDF

Installation and Care Instruction

This installation instructions corresponds to the state of the art at the time of production. Please check with your dealer regarding any changes before installation.



Please note before installation:

Design Vinyl **HDF** is generally laid floating, i.e. not glued to the ground. The subfloor itself, as described in DIN 18356, must be even, clean, dry and resistant to tension and pressure.

Suitable subfloors are e.g. screeds of any kind, chipboard, old plank flooring, PVC flooring, tiles, provided the above mentioned conditions are met. Installation over any type of carpet is not allowed. The evenness of the subfloor must comply with the requirements of DIN 18202, line 4, e.g. 1 m long \leq 3 mm unevenness.

Design Vinyl **HDF** is not suitable as a self-supporting floor on beamed ceilings. In the case of mineral-based subfloor (especially important in new buildings), a moisture measurement of the subfloor must be carried out before installation begins. (Cement screeds max. 2.0% CM, anhydrite screeds max. 0.5% CM residual moisture. For hot water floor heating: Anhydrite screeds max. 0.3% CM).

When installing Design Vinyl **HDF**, a vapour barrier with an SD value $>$ 100m (e.g. Diffufol) must be laid down on all mineral sub-surfaces. It should overlap approx. 20 cm and be taped down at the ends.

Unevenness in screeds should be compensated with suitable levelling fillers. Chipboard or wooden floor may be ground. Old plank flooring must be free of vibration and are screwed back – if necessary –.

Design Vinyl **HDF** must be acclimatised for approx. 48 hours before installing in the installation room at 18-22° C and a relative humidity of 50-60%, lying flat in a closed box. Open the packages only during the installation and mix planks from several packages.

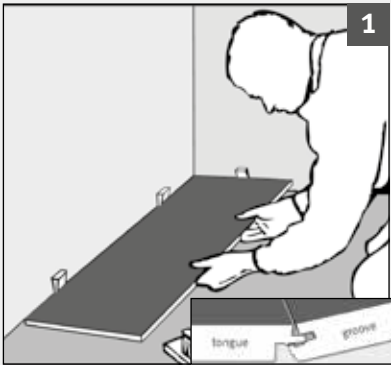
Please carefully check the planks for transport and material damage in day-light before installation. There is no entitlement to claims for compensation for processed material. Differences in colour and structure are material-related and therefore do not constitute grounds for complaint. Direct sunlight can cause fading and colour changes.

The blend to be considered depends on the size of the room and the room layout, but is usually about 3%.

In areas of south-facing floor-to-ceiling windows and skylights, sufficient shading by curtains or blinds must be provided.

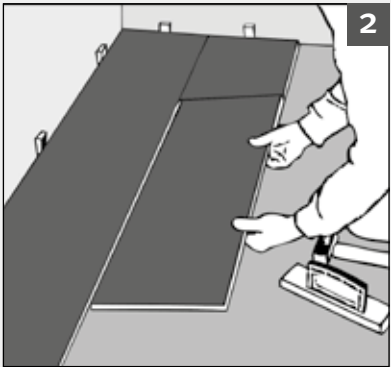
Installation

Design Vinyl HDF



For optimal installation you need the following tools and materials that you should have before installation: PE film, adhesive tape, folding ruler, pencil, jigsaw, jack saw, club hammer, aligning pole, pull bar, tapping block, spacer wedges.

1 Start installing from the right in one corner of the room. Lay the first plank so that the groove side faces the wall (see picture 1). On the planks required for the first row, shorten the lower groove cheek around the part protruding beyond the top surface. Click these boards with a hammering block sidewise into the first one and align the first row of boards precisely using spacers. Proceed in the same manner with the rest of the planks of this row. The distance from the wall and all fixed structures must be at least 10 mm (in large rooms at least 1.5mm per meter). Make sure to remove the wedges after installation. It is advisable to lay the elements along the incidence of light. Exception: In case of old plank flooring, lay transversely to the laying direction of the old floor.

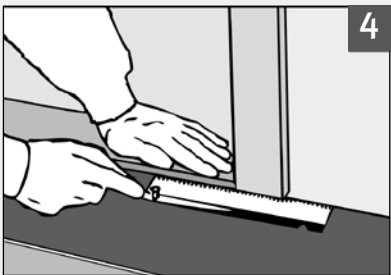


2 After the first row has been aligned with a set bar, start with installation of the second row with the remainder of the last plank of the first row. Note that for each additional row the frontal offset must be at least 150 mm. Place the first board at a slight diagonal as illustrated, and click it into place using the tapping block and club hammer. Proceed in the same manner with the second board and drive the front joint of this board into the first board using the tapping block, and so forth. It is necessary to include an expansion joint when the length/width of the room is more than 8m. In addition, an expansion joint must be integrated into every door area, which can be concealed with a jointing profile.

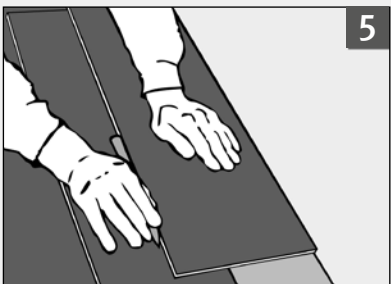


3 In the event of heating pipe perforations, release the plank at the joint and cover with radiator rosettes.

4 As shown, shorten the wooden door frames and door leaves to the height of the floor.



5 Fitting the last row of planks: Place the plank to be repeated exactly on the last laid row of planks. Then mark the longitudinal section using another plank. This type of marking leaves sufficient distance to the wall in order to angle the last row by means of pull bar. The last row of boards is driven together using the long side of the crowbar and the front of the hammering block.



Please note after installation

1. Cleaning and care

In addition to the use, the longevity of your Design Vinyl HDF finished flooring depends significantly on its cleaning and care. Therefore, please use appropriate products and take note of the information on the container. When using chair with rollers, please use soft rollers. Install a suitable dirt trap in the entrance area. (Floor mat, carpet, clean-up zone, etc.) Attach suitable glides under the table and chair legs.

Do not use aggressive and/or solvent or glycerine-containing agents. Especially with overdose, these can attack the surface and even make subsequent rework impossible.

Make sure to note the information on the containers. Please note that depending on the area of use, special cleaning agents must be used. We recommend to use Dr. Schutz or similar care products.

To be cleaned with a damp cloth only - never wet!

2. The indoor climate

Design Vinyl HDF reacts to climatic conditions. Therefore, for the sake of your own health, make sure you have a balanced and pleasant indoor climate. Ideally you should have a relative humidity of 50-60% and a room temperature of about 18-22° C. The surface temperature of hot water underfloor heating may not exceed 29° C. During the heating season, the room air dries out extremely. In order to maintain a constant humidity, water tanks are required on the radiators and humidifiers are required for large rooms. Ventilate well in case of high humidity in summer and autumn. Direct sunlight can cause fading and discoloration. Direct sunlight can cause fading and discoloration.

We hope that you will be pleased with your Design Vinyl HDF finished flooring for a long time.